

Welcome to all our club members and occasional readers

This is the fourth edition of our weekly bulletin. This week we have details of upcoming club and International events, results from last week's club tournaments, and the answer to our final Blitz Immortal problem position.

Upcoming Events

Our ECF online events for the upcoming week are as below:

Friday Evening Slow Blitz (Swiss) (ECF Members) – 14/02 at 8-00 pm – 10|0

<https://www.chess.com/live#r=162982>

Saturday Evening Slow Blitz (lichess) (English Players) – 15/02 at 8-00 pm – 10|0

<https://lichess.org/tournament/oHUqMCHr>

Sunday Evening Rapid (ECF Members) – 16/02 at 7-30 pm – 15|10

Replaced by International fixture for this week

Sunday Evening Bullet (English Players) – 16/02 at 9-00 pm – 1|0

<https://lichess.org/tournament/5jUvygwE>

Wednesday Evening Blitz (English Players) – 12/02 at 7-30 pm – 5|2

<https://lichess.org/tournament/w8s51AFk>

Internationals

The English Players club is a member of the Association of (National) lichess Clubs. The club will be playing in lichess Cup of Nations team battles going forwards and we will add Team Battle fixtures to the schedule as the dates are agreed.

<https://lichess.org/blog/XhDYRRQAACIAYX0a/str-eamer-team-battle>

The ECF also endorses the Team England Live (TEL) Club on chess.com for fixtures in the Live Chess European League (Season 1) - and World League (Season 5) – which is due to start shortly.

We have two International fixtures this coming weekend on Saturday 15^h and Sunday 16th Feb with fixtures on lichess and chess.com.

Our lichess.org International will be a Cup of Nations team battle where we will be fielding a team to play with 7 other nations in an arena event.

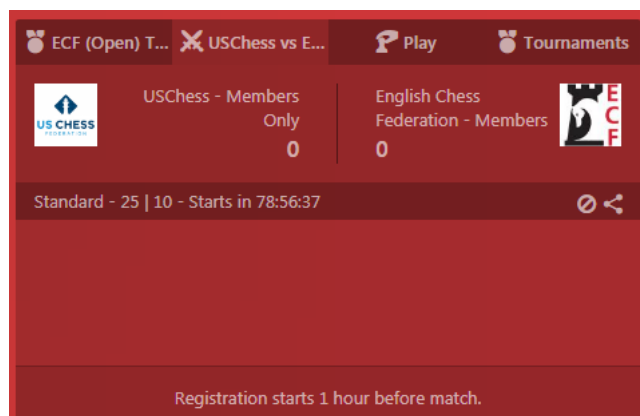


<https://lichess.org/tournament/t2avr1D9>

There are nine national teams in our group to date (England, USA, Spain, Russia, Ukraine, Bulgaria, Moldova, Iran and Sri Lanka). This will be a one hour arena Blitz event with a 3|0 time control. Players will be paired with players from opposing teams as they complete games – the winning team will be the one with the most points at the end of the event.

The top 2 teams in the group will play in the final on Sunday (16th Feb) (time to be confirmed).

Our chess.com International is a separate England-USA fixture between ECF Members and USCF Members which is scheduled for 7-30 pm on Sunday 16th Feb.



<https://www.chess.com/live#tm=6091>

This will be a one or two round team match with as many boards as we can manage playing in chess.com rating order. Joining opens at 6-30 pm and you will be paired for a 7-30 pm start with a USCF opponent with two round of 15|0

rapidplay with colours reversed between rounds.

We have a number of players already signed up for the England teams and do please join either or both of the events if you can make it.

Our Club memberships

Our memberships continue to grow with numbers as follows:

chess.com	Open club	2,250
chess.com	Members	195
lichess	English Players	156

Details and joining instructions can be found here as ever: <https://englishchessonline.org.uk/>

Last Week's Results

Last weeks ECF club tournaments and results were as below.

Friday Evening Slow Blitz (Swiss) (ECF Members) - 07/02 at 8-00 pm – 10|0

<https://www.chess.com/tournament/live/ecf-friday-evening-slow-blitz-1144582>

Saturday Evening Slow Blitz (lichess) (English Players) – 08/02 at 8-00 pm – 5|5

<https://lichess.org/tournament/AAXTeMdP>

ECF Saturday Slow Blitz Arena

PeterChaplin	Necroscope640	dejan_Jekic
Performance 2231	Performance 2060	Performance 1981
Games played 5	Games played 7	Games played 4
Win rate 80%	Win rate 57%	Win rate 50%
Berserk rate 0%	Berserk rate 0%	Berserk rate 0%

Sunday Evening Slow Blitz (ECF Members) – 09/02 at 7-30 pm – 15|10

<https://www.chess.com/tournament/live/ecf-members-sunday-evening-rapid-1145660>

Wednesday Evening Blitz (English Players) – 12/02 at 7-30 pm – 3|2

<https://lichess.org/tournament/w8s51AFk>

Puzzle of the Week (continued)

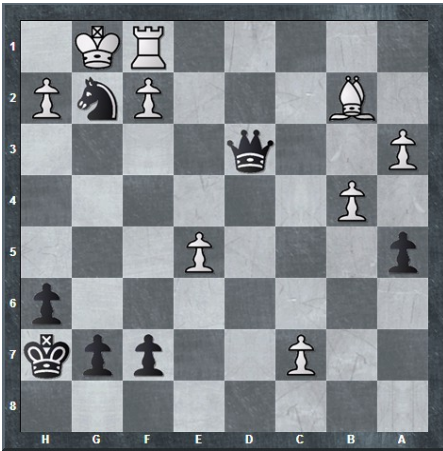
We have been following the 'Immortal Blitz Game' played in 2018 on chess.com at 3|0 time control between the Iranian GM Firoosza and one of the strongest Blitz players of all time Hikaru Nakamura.



This was the first critical position after move 20 at which point Alireza Firouzszja (Black) played the simple interference sacrifice 21..d5, sacrificing the bishop on g3 and breaking the lines of communication in W's position.

After several further sacrifices we reached the following position which was our puzzle from last week.

White has just played 28.bxc7 (looking to Q the pawn) to reach the position below with black to play.

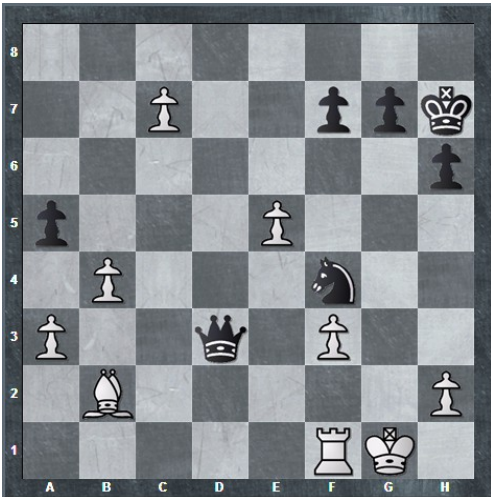


What was B's next move and why did Nakamura resign?

Firouszja's next move was the simple 28..Nc5! with unstoppable threats on the light squares. Queening the pawn leads to mate in 3 as follows:

29.c8Q Qg6+ 30.Qg4 Qxg4+ 31.Kh1 Qg2#

White can put up slightly more resistance with 29 f3 to create some space for the K to escape.



However its still mate – this time in 5 with the precise sequence 29...Qc2 (threatening mate on f2), 30.Rf2 (only move) Qg6+ 31.Kh1 Qb1+ 32 Bc1 Qxc1, 33 Rf1 Qxf1 #.

Good luck in your online club games and either / both of the Weekend's Internationals.

Also do please contact the editors if you would like to provide material for the Newsletter – including a favourite online club game, opening, middle or endgame themes and ideas, and chess puzzles or studies.

ECF Online Newsletter

Contributing Editors

Nigel Towers

Peter Chaplin