

## Welcome to all our club members and occasional readers

This is the third edition of our weekly bulletin. This week we have details of upcoming club and International events, results from last weeks club tournaments, and the answer to our second Blitz Immortal problem position.

## Upcoming Events

Our ECF online events for the upcoming week are as below:

Friday Evening Slow Blitz (Swiss) (ECF Members) – 07/02 at 8-00 pm – 10|0

<https://www.chess.com/live#t=1144582>

Saturday Evening Slow Blitz (lichess) (English Players) – 08/02 at 8-00 pm – 10|0

<https://lichess.org/tournament/d41NBZ6I>

Sunday Evening Rapid (ECF Members) – 09/02 at 7-30 pm – 15|10

<https://www.chess.com/live#t=1145660>

Sunday Evening Bullet (English Players) – 09/02 at 9-00 pm – 1.5|0

<https://lichess.org/tournament/DksZf58M>

Wednesday Evening Blitz (English Players) – 12/02 at 7-30 pm – 5|2

<https://lichess.org/tournament/eBJmrCUR>

## International

The English Players club is a member of the Association of (National) lichess Clubs. The club will be playing in lichess Cup of Nations team battles going forwards and we will add Team Battle fixtures to the schedule as the dates are agreed.

We are also hoping to take part in some of the Streamer Team Battles organised by lichess.

<https://lichess.org/blog/XhDYRRQAACIAYX0a/streamer-team-battle>

The ECF also endorses the Team England Live (TEL) Club on chess.com for fixtures in the Live Chess European League (Season 1) - and World

League (Season 5) – which is due to start shortly.

We have confirmed our chess.com England USA match (ECF Members v USCF Members) which will now be at 7-30 pm on Sunday 16<sup>th</sup> Feb on chess.com. This will be a two round team match with as many boards as we can manage playing in chess.com rating order. Joining opens at 6-30 pm and you will be paired with a USCF opponent with two round of 15|0 rapidplay with colours reversed between rounds. We have a number of titled players already signed up for the England team and do please join the event if you can make it.

## Our club memberships are now:

chess.com	Open club	1,314
chess.com	Members	179
lichess	English Players	143

Details and joining instructions can be found here as ever: <https://englishchessonline.org.uk/>

## Last Week's Results

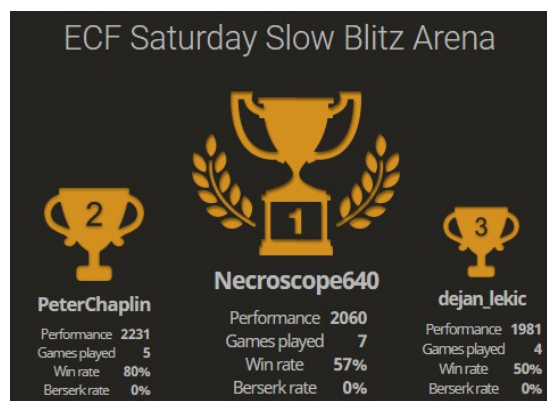
Last weeks ECF club tournaments and results were as below.

Friday Evening Slow Blitz (Swiss) (ECF Members) - 31/01 at 8-00 pm – 10|0

<https://www.chess.com/tournament/live/arena/friday-evening-slow-blitz-159547>

Saturday Evening Blitz (lichess) (English Players) – 01/02 at 8-00 pm – 5|5

<https://lichess.org/tournament/AAXTeMdP>



Sunday Evening Slow Blitz (ECF Members) – 02/02 at 7-30 pm – 15|10

<https://lichess.org/tournament/AAXTeMdP>

Sunday Evening Bullet (English Players) – 02/02 at 9-30 pm – 1.5|0

<https://lichess.org/tournament/PRSAfjyj>

Wednesday Evening Blitz (English Players) – 05/02 at 7-30 pm – 352

<https://lichess.org/tournament/V7o6n65e>

**Puzzle of the Week (continued)**

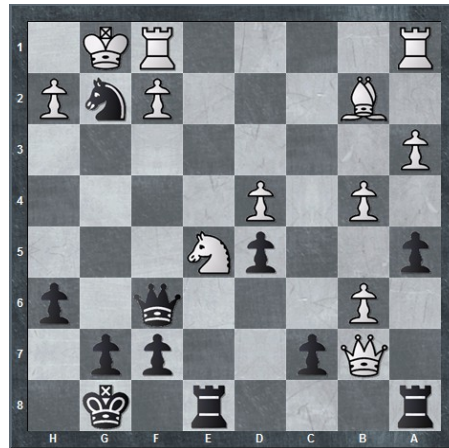
We have been following the 'Immortal Blitz Game' played in 2018 on chess.com at 3|0 time control between the Iranian GM Firouszja and one of the strongest Blitz players of all time Hikaru Nakamura.



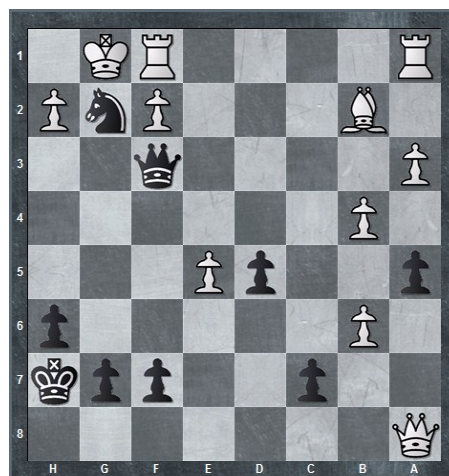
This was the first critical position after move 20 at which point Alireza Firouszja (Black) played the simple interference sacrifice 21..d5, sacrificing the bishop on g3 and breaking the lines of communication in W's position.

Nakamura played 22 cb taking the free piece. Play continued: 22.. Nxc7 offering a second piece which Nakamura refuses playing the safe looking Nd4 to reach the position below and setup the winning combinations for the Iranian

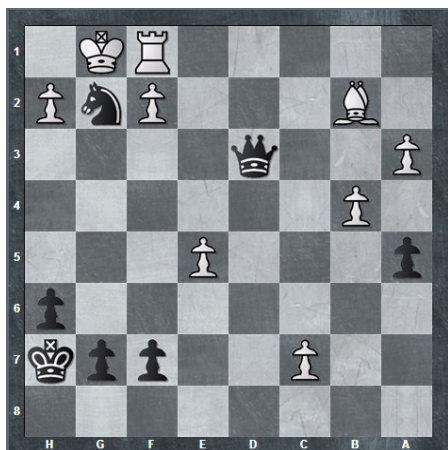
GM.



Firouzja now played the immediate tactical shot 23 Rxe5 – after which Nakamura recaptured with the pawn and play continued 23..dxe5 Qf3 (taking advantage of W's light squared weaknesses threatening an immediate mate on g7 with Nf5) 24.Qxa8+ picking up the rook (why not?) and ..Kh7 to reach the following position:



Nakamura now has to sacrifice his Q to avoid the mate on g7. So play continued 25 Qxd5 Qxd5 26. Rad1 Qf3 (back again) and then 27 Rd3 – another sacrifice and the only way to deflect the Q. Play continues 27 ...Qxd3 28.bxc7 (looking to Q the pawn) and 28.. Qf3(back again) – to reach the position below.



What was B's next move and why did Nakamura resign?

Good luck in your online club games for the coming week! Also do please contact the editors if you would like to provide material for the Newsletter – including a favourite online club game, opening, middle or endgame themes and ideas, and chess puzzles or studies.

### **ECF Online Newsletter**

Contributing Editors

Nigel Towers

Peter Chaplin